

Quick Reference Instructions for Use

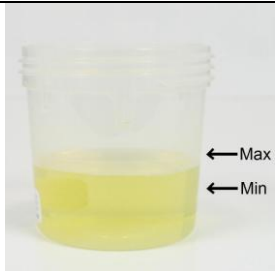
C = Control Line
T1 = Test Line for drug
name on top
portion
T2 = Test Line for drug
name below
(if no print on
lower color, then
no T2 drug tested)



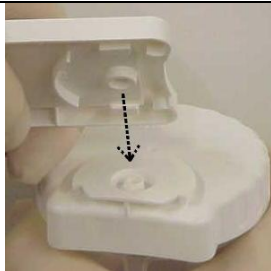
The device detects one or more of the following drug classes at the following concentrations:

Amphetamine (AMP)	1000 ng/ml
Barbiturates (BAR)	200 ng/ml
Benzodiazepines (BZO)	300 ng/ml
Cocaine (COC)	300 ng/ml
Methadone (MTD)	300 ng/ml
Methamphetamine (mAMP)	1000 ng/ml
MDMA (mAMP)	1500 ng/ml
Opiates (OPI)	300 ng/ml
Opiates (OPI2)	2000 ng/ml
Oxycodone (OXY)	100 ng/ml
Phencyclidine (PCP)	25 ng/ml
Propoxyphene (PPX)	300 ng/ml
Cannabinoids (THC)	50 ng/ml

Note: If LFAS adulterant strip is present (to the right of drug test strips), refer to the Color Comparator Chart to interpret results.



Urine level must be between the Minimum and Maximum lines on cup.
Screw lid onto cup -- **TIGHTEN FIRMLY.**



Remove SURE-SCREEN[®] device from foil pouch. Hold the cup and align device and cup as illustrated.



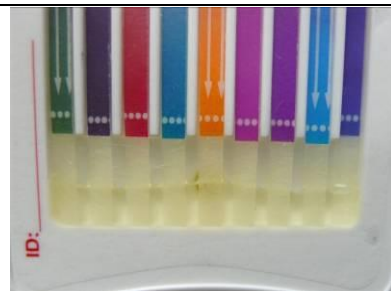
Place the device securely on to the lid---the parts should interlock easily and move freely clockwise.



Rotate the device clockwise ¼ of a turn (i.e. from 9 o'clock to 12 o'clock) until it snaps into place.



Place cup on its side as shown above to start urine flow.



Example Sufficient URINE Present --about ¼ inch *evenly distributed*-- is all that is needed for the device to migrate properly. More urine is NOT necessary! Allow test device to rest undisturbed for 5 minutes.

READING THE TEST RESULTS Read Time: 5 minutes

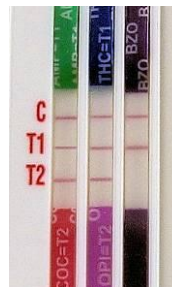
For examples at right:
C = Control
T1 Tests = AMP, THC, BZO
T2 Tests = COC, OPI

VALID:

A reddish-purple line appears in the "C" area for each test.

INVALID:

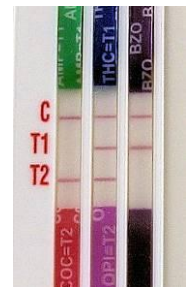
No control line "C" present. Retest urine with a new device.



NEGATIVE:

Any reddish-purple line visible at 5 min. in the test area is a negative result (even a faint or broken line).

Example above: all 5 test results are negative.



PRELIMINARY POSITIVE:

The absence of a line in the test area is a preliminary positive result.

Example above: the AMP (Amphetamine) test is a preliminary positive.

Strips with two tests will be labeled with two colors. The top color will indicate the T1 test with drug test name=T1. The bottom color will indicate the T2 test with test name=T2. Strips with only one color will have test results appear at the T1 position only.

Seal Properly if Transporting to Laboratory for confirmation:

- Tighten the lid
- Use dual seal provided with cup
 - Seal sample port
 - Seal vent hole



For complete product information refer to the **PACKAGE INSERT** available at <http://www.medtox.com/ProductTraining.aspx>

or contact Technical Support at 1-877-643-5703.

PROFILE[®]-III / PROFILE[®]-IIIA / VERDICT[®]-III Package Insert Rev. 1/10, 101721

**MEDTOX Diagnostics, Inc. • 1238 Anthony Road
Burlington, NC 27215**

Phone: 1-800-832-3244 • Fax: 651-286-6222

E-mail: sales@medtox.com